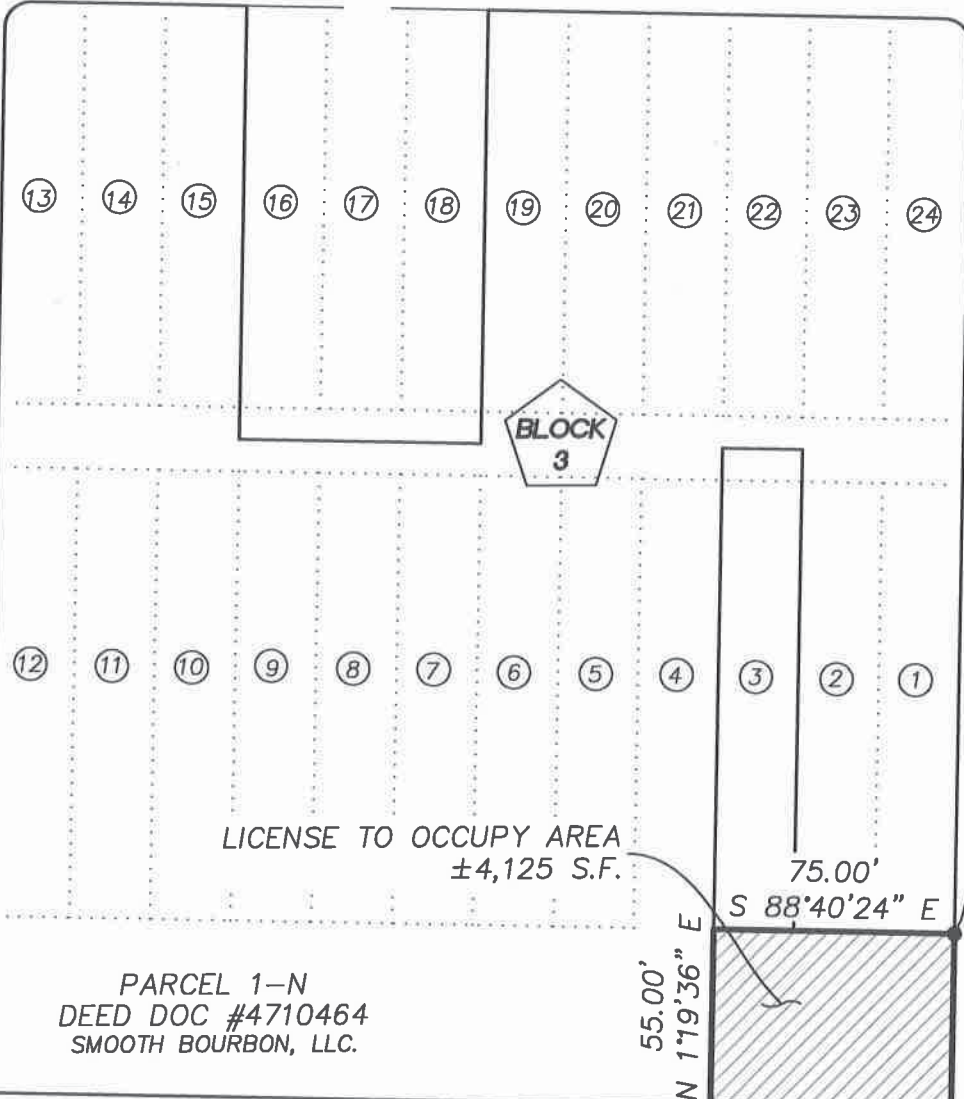


**'C' STREET**  
(DEDICATED TO THE CITY OF SPARKS)

**VICTORIAN PLAZA CIRCLE**  
(DEDICATED TO THE CITY OF SPARKS PER T.M. 106 & P.M. 3119)

**10TH STREET**  
(DEDICATED TO THE CITY OF SPARKS PER T.M. 106)



LICENSE TO OCCUPY AREA  
±4,125 S.F.

PARCEL 1-N  
DEED DOC #4710464  
SMOOTH BOURBON, LLC.



**VICTORIAN AVENUE**  
(FORMERLY KNOWN AS HARRIMAN STREET)  
((DEDICATED TO THE CITY OF SPARKS PER T.M. 106))

**SCALE: 1" = 60'**



**EXHIBIT B**

WWW.ODYSSEY-CIVIL-ENGINEERING.COM

**Odyssey ENGINEERING INCORPORATED**

**LICENSE TO OCCUPY AREA**

LOCATED WITHIN THE SOUTHEAST 1/4 OF  
SECTION 5, T.19N., R.20E., M.D.M.

**SPARKS WASHOE COUNTY NEVADA**